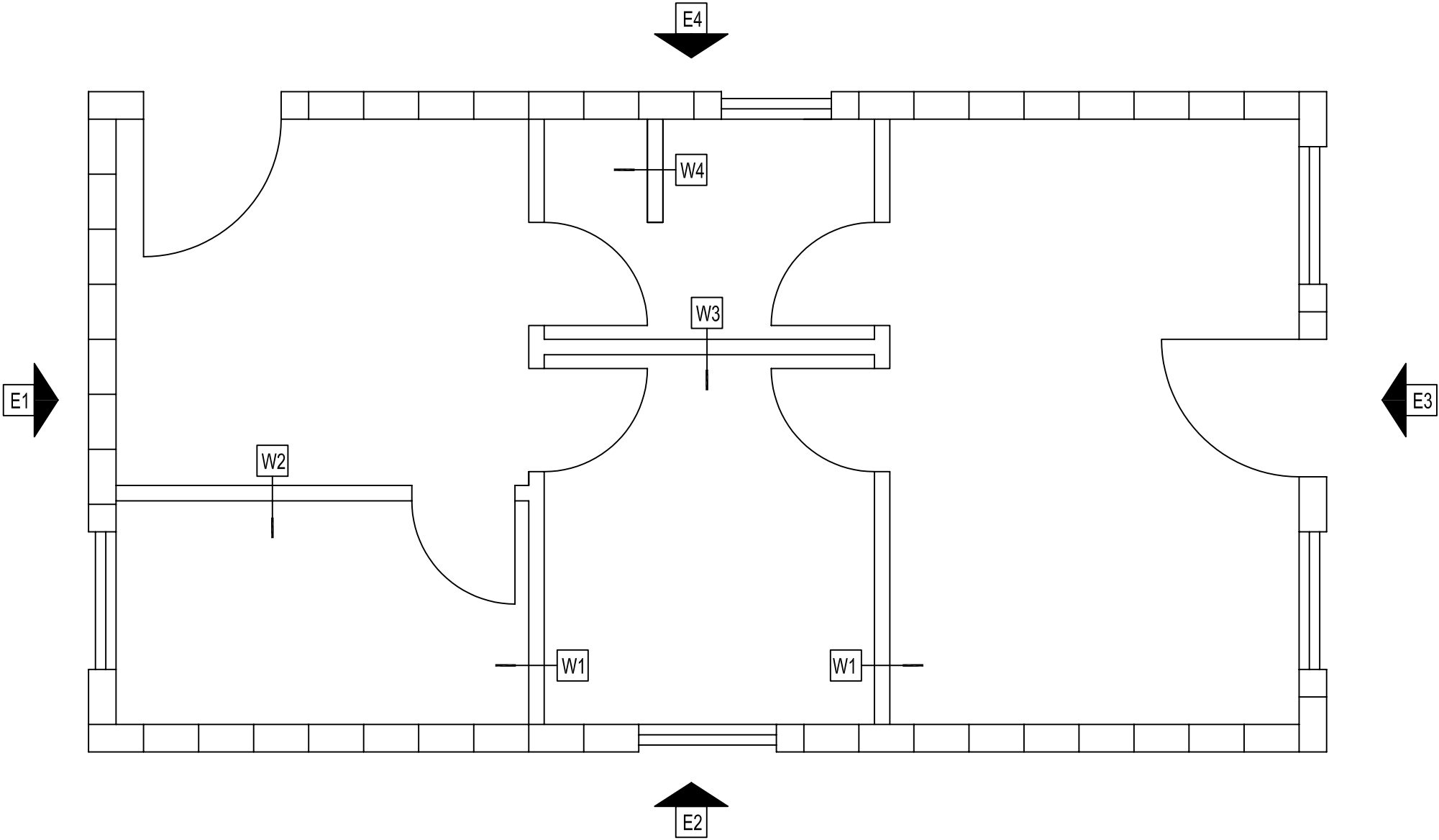
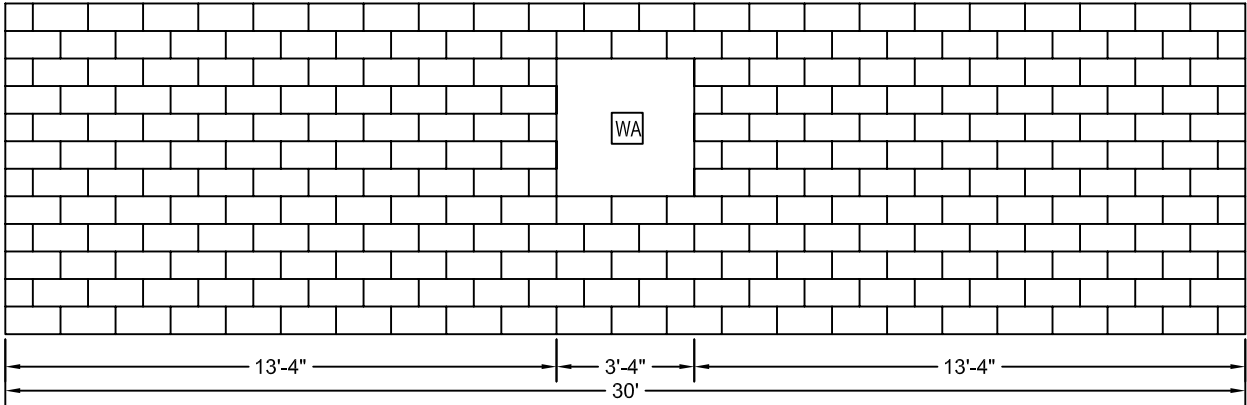
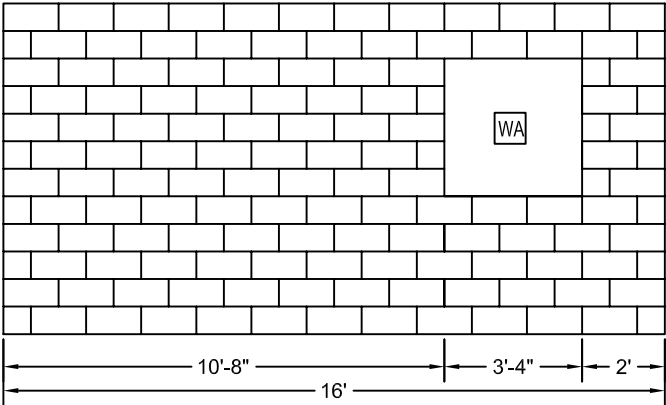


General Plan

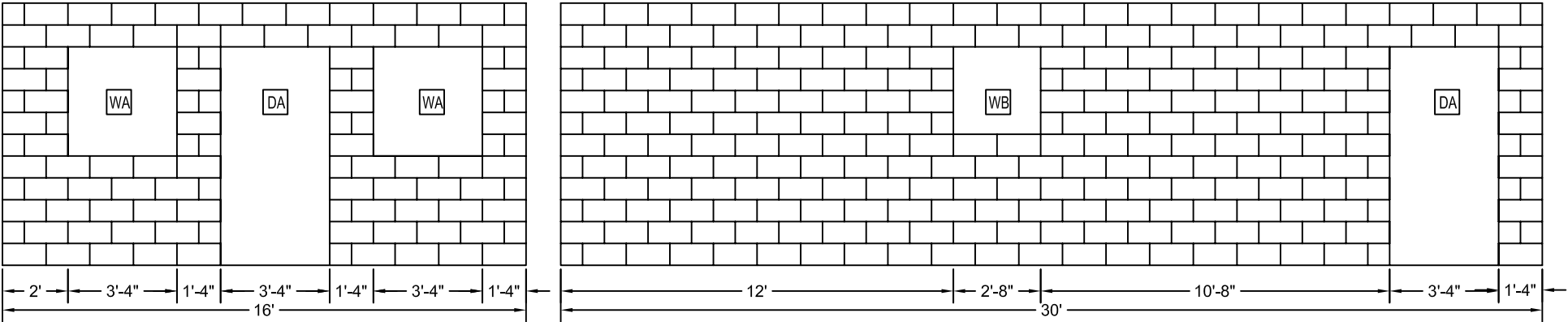


Elevation 1 & 2



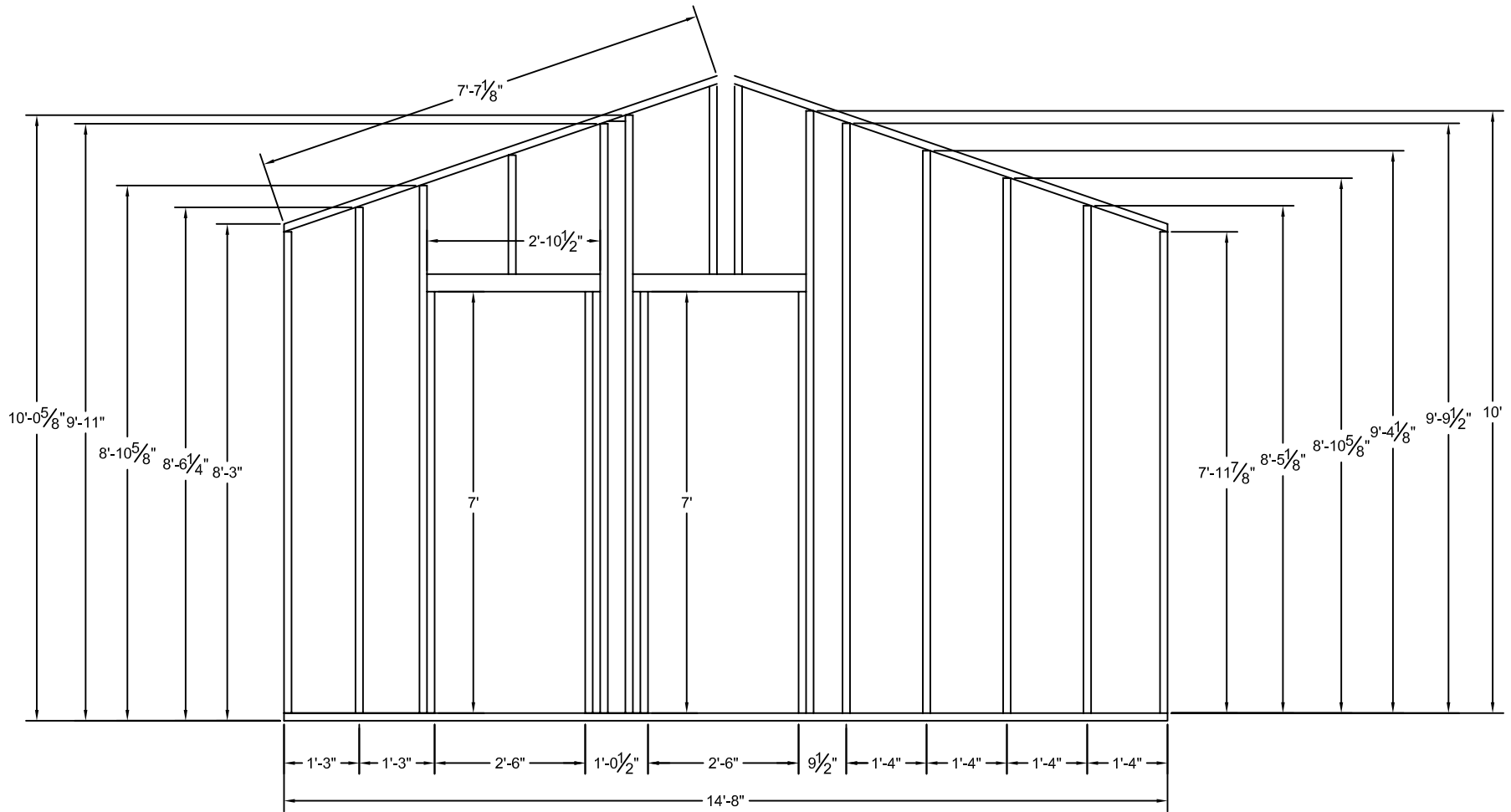
- Notes:
- WA - 40" x 40" Window opening
 - WB - 32" x 32" Window opening
 - DA - 3'-4" x 7'-0" Door opening

Elevation 3 & 4



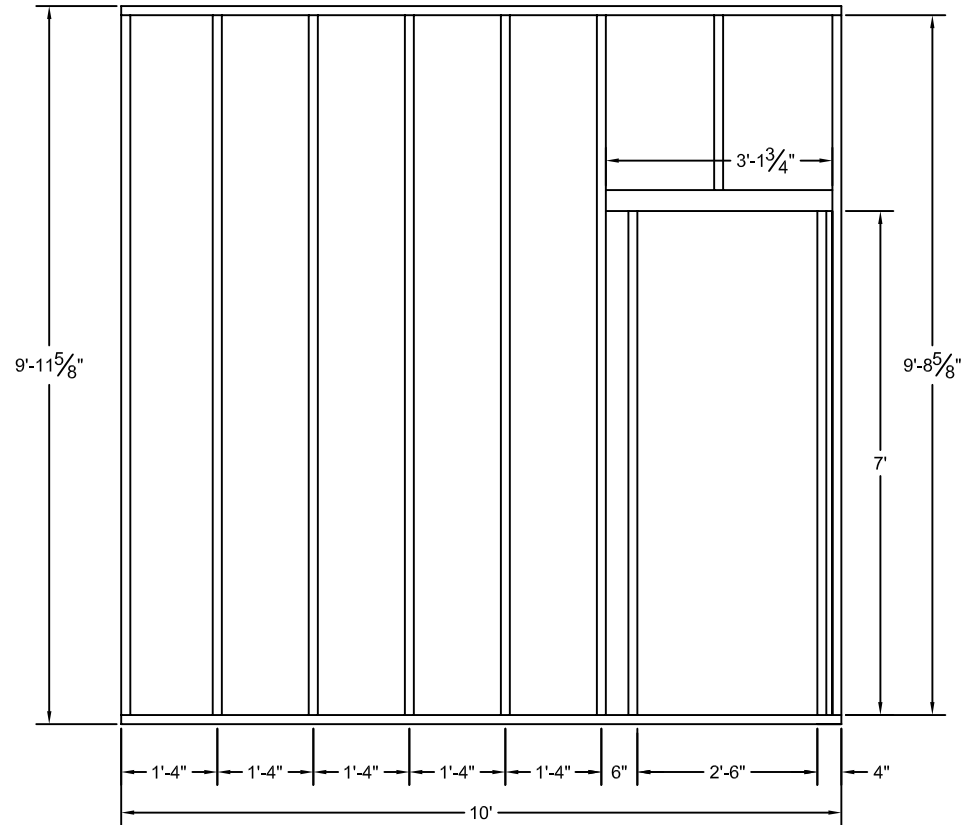
- Notes:
- WA - 40" x 40" Window opening
 - WB - 32" x 32" Window opening
 - DA - 3'-4" x 7'-0" Door opening

Wall 1

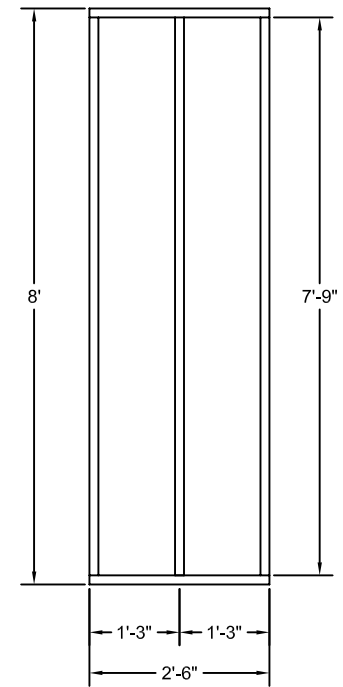
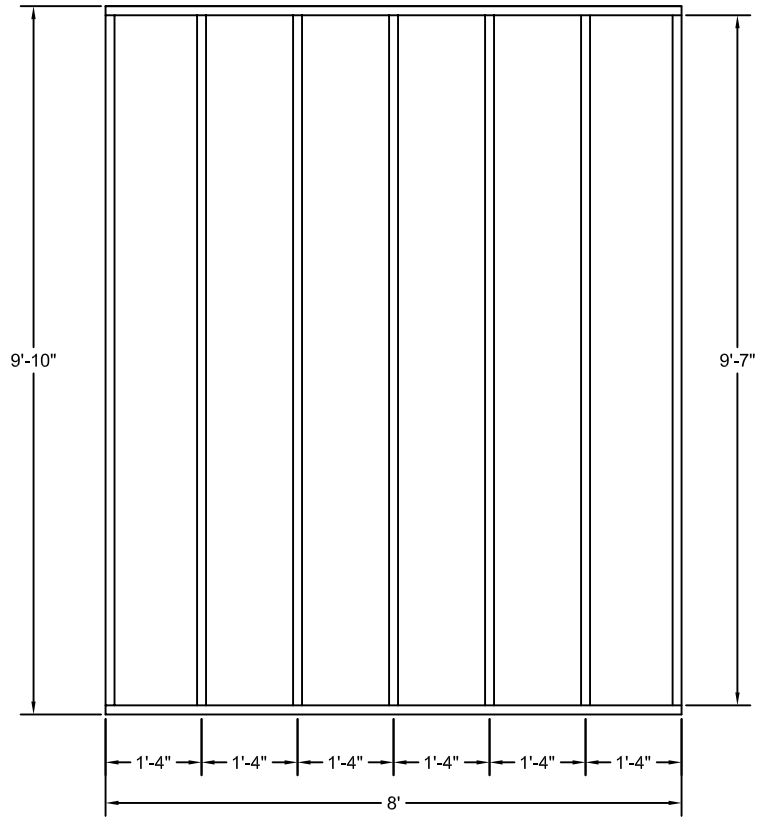


Notes:
Build two

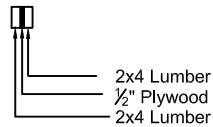
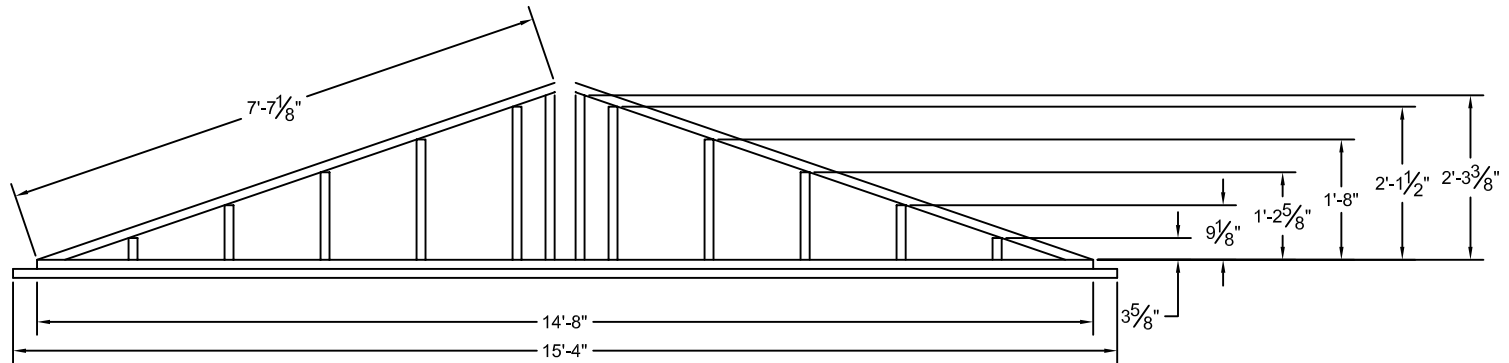
Wall 3



Wall 3 & 4



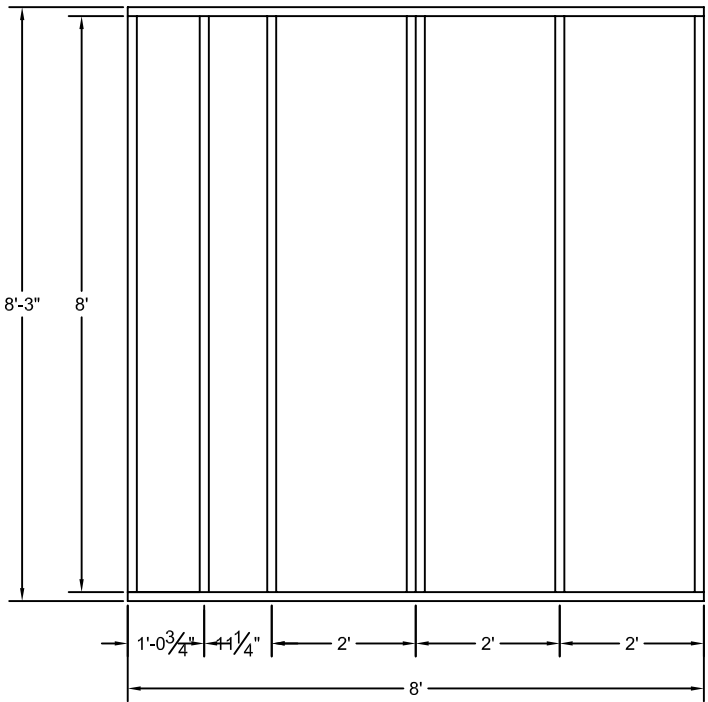
Gable End & Beam



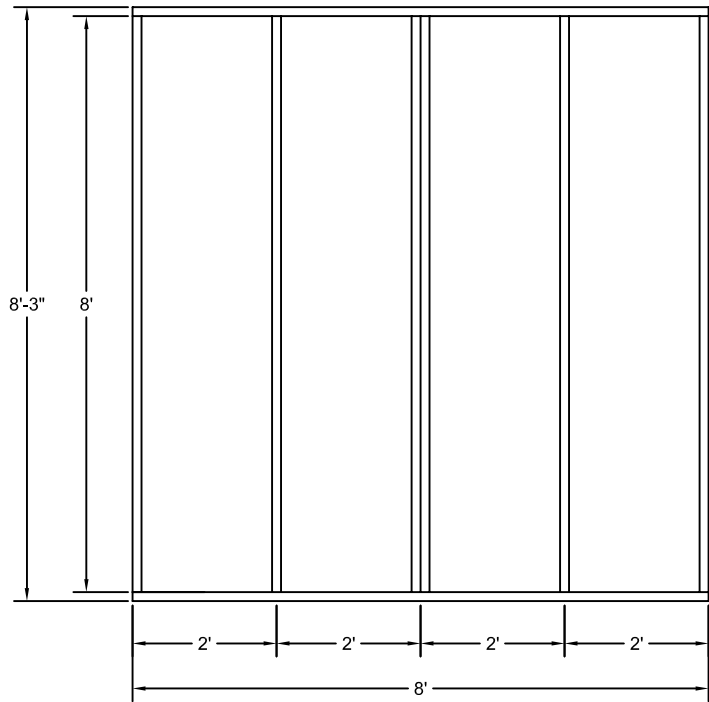
Notes:

Nail Gable end directly to concrete block. Overlap the exterior sheathing 6" over the outside face of the concrete block wall. Use adhesive/sealant between sheathing and concrete block to minimize moisture transmission. Beam to be 32' long. Stagger all joints.

Rafter



Notes:
Build four



Notes:
Build four